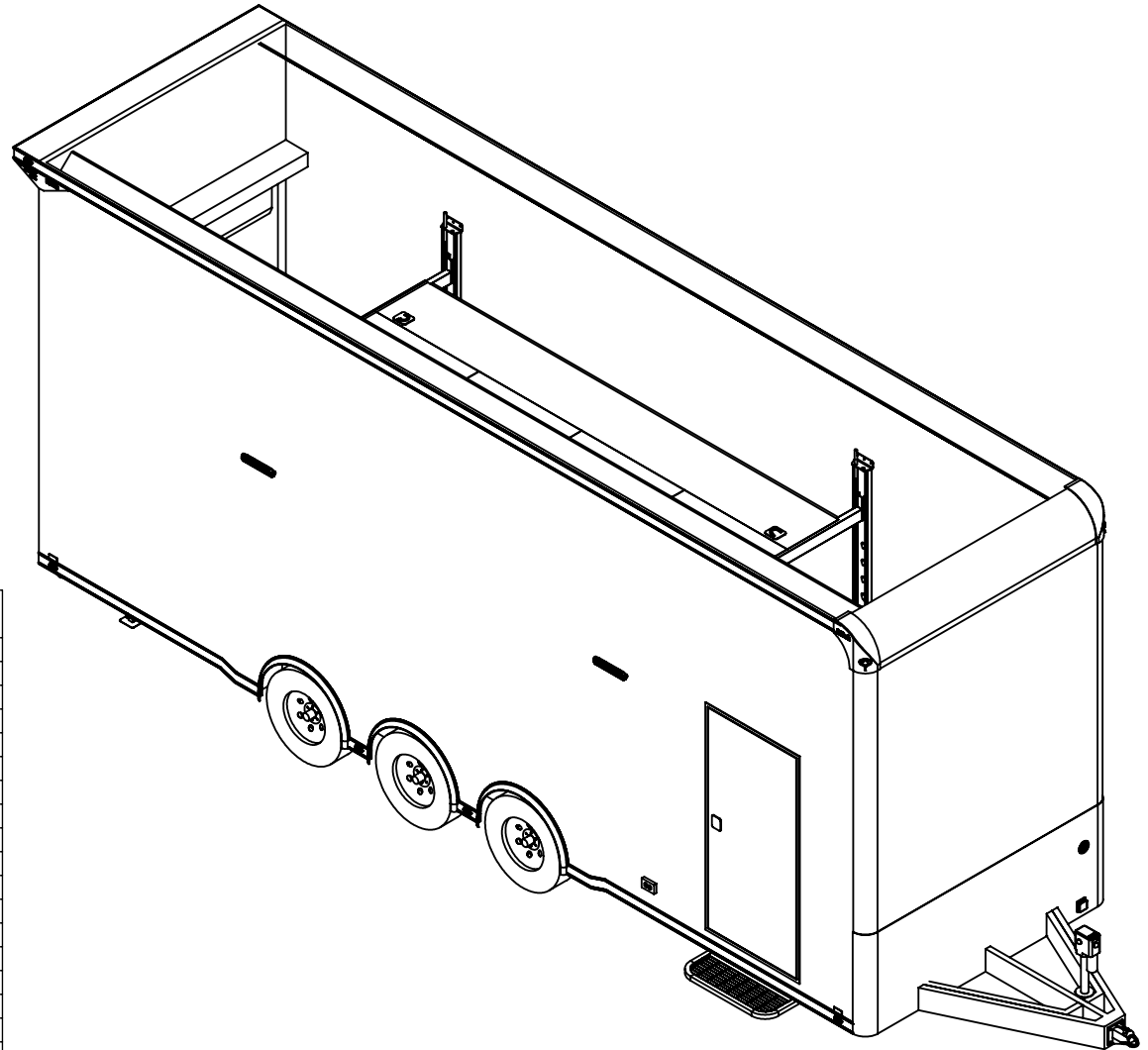
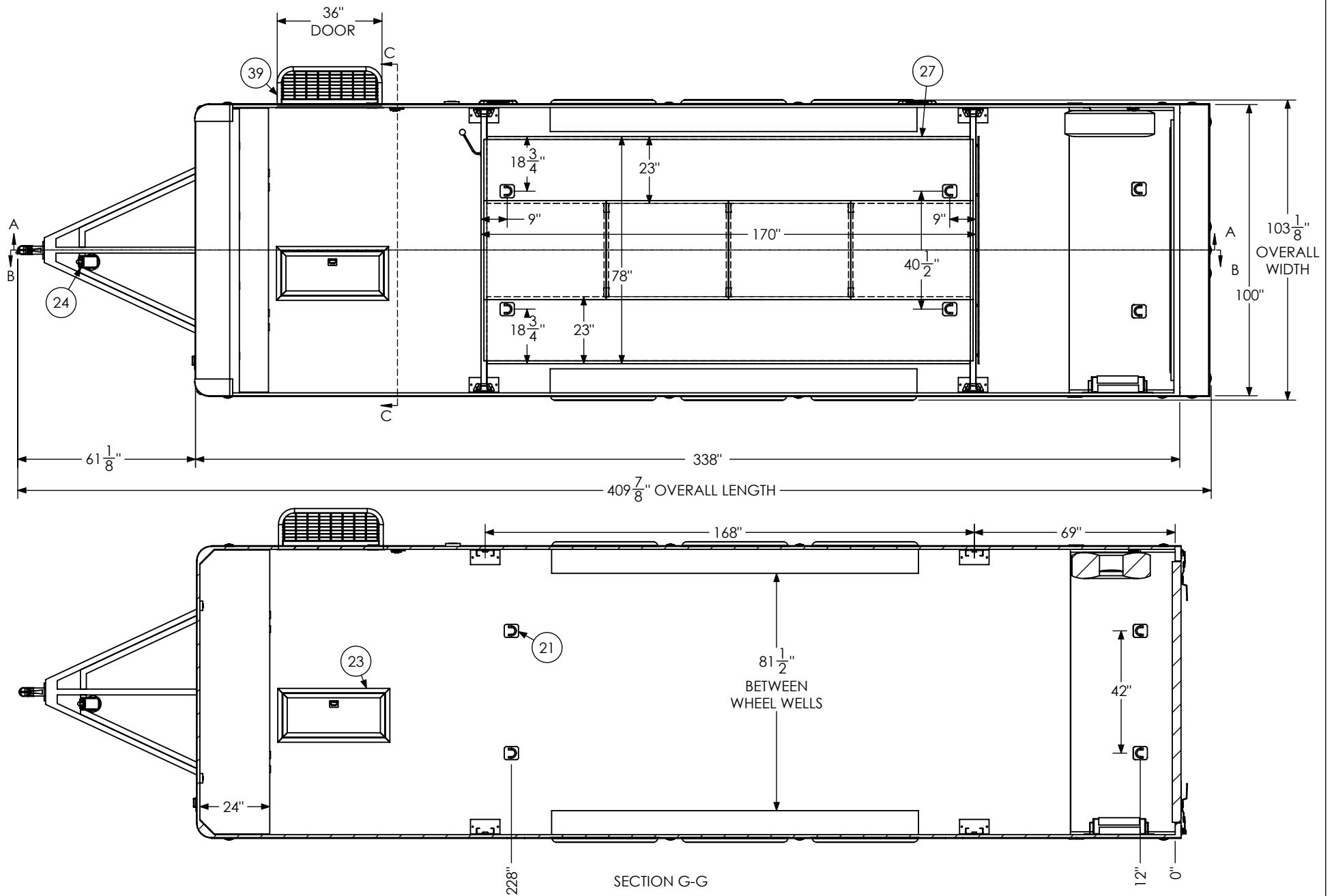


ITEM NO.	FILE NAME	DESCRIPTION	QTY.
1	Axle, Dexter	6000#, 22.5 UP, 93HF, 78AB T	3
9	BSL Cabinet, Overhead		1
10	BSL Cabinet, Straight Base		1
11	Bar Lock		2
12	Battery Box		1
13	Battery Vent		1
14	Bumpers	1"	1
15	Cast Corners		1
16	Caster Wheel		2
18	Clearance Light	Red Lens	9
19	Coupler - Flat Nose	25K - Bulldog	1
20	Cover, Spring Assist		1
21	D-Ring	5,000	8
22	Door, Entrance	36" x 78"	1
23	In-Floor Compartment	Hydraulics Box (14"x34")	1
24	Jack, Power	4500#	1
25	Jack, Rear Stabilizer		2
26	LICENSE PLATE BRACKET		1
27	Lift Assembly SS -BSL	14'	1
28	Lift Ramp Storage Assembly		1
29	Light	18" 12v LED	6
30	Light, License Plate		1
31	Load Center	30 Amp L/C - 60 Amp Conv	1
32	Loading Light - LED	13.7" 12V Loading Light	3
33	Motorbase Plug	30 Amp	1
34	Outlet	120V 20 Amp	4
35	Outlet	Lift Control Plug	1
36	Ramp Extension	16" Transition Flap	1
39	Slide Out Step	36" Wide	1
40	Spare Tire Assembly		1
41	Switch	12v Cutoff	1
42	Switch	2 - 12V Switches	1
43	Switch	1 - 12V Switch	1
44	Tail Light	Slimline	4
45	Tire	ST235/80R16	6



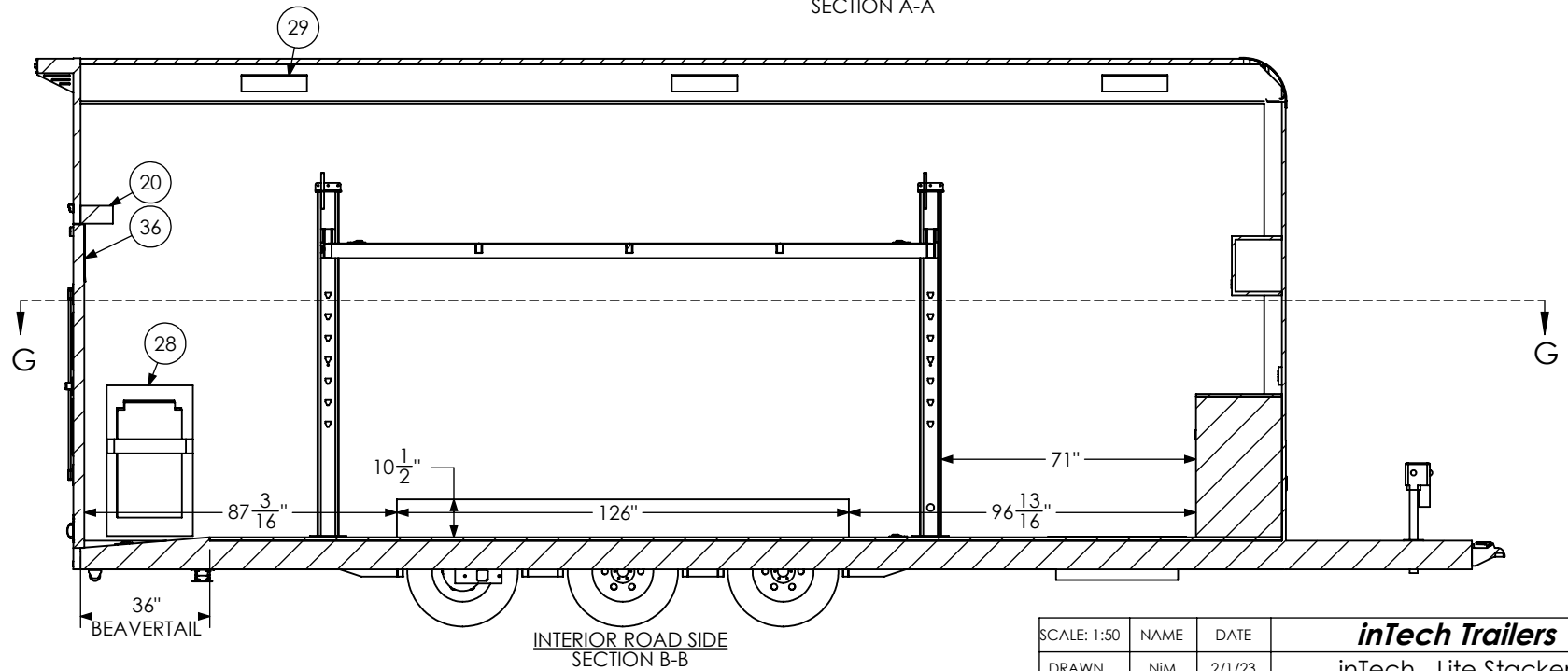
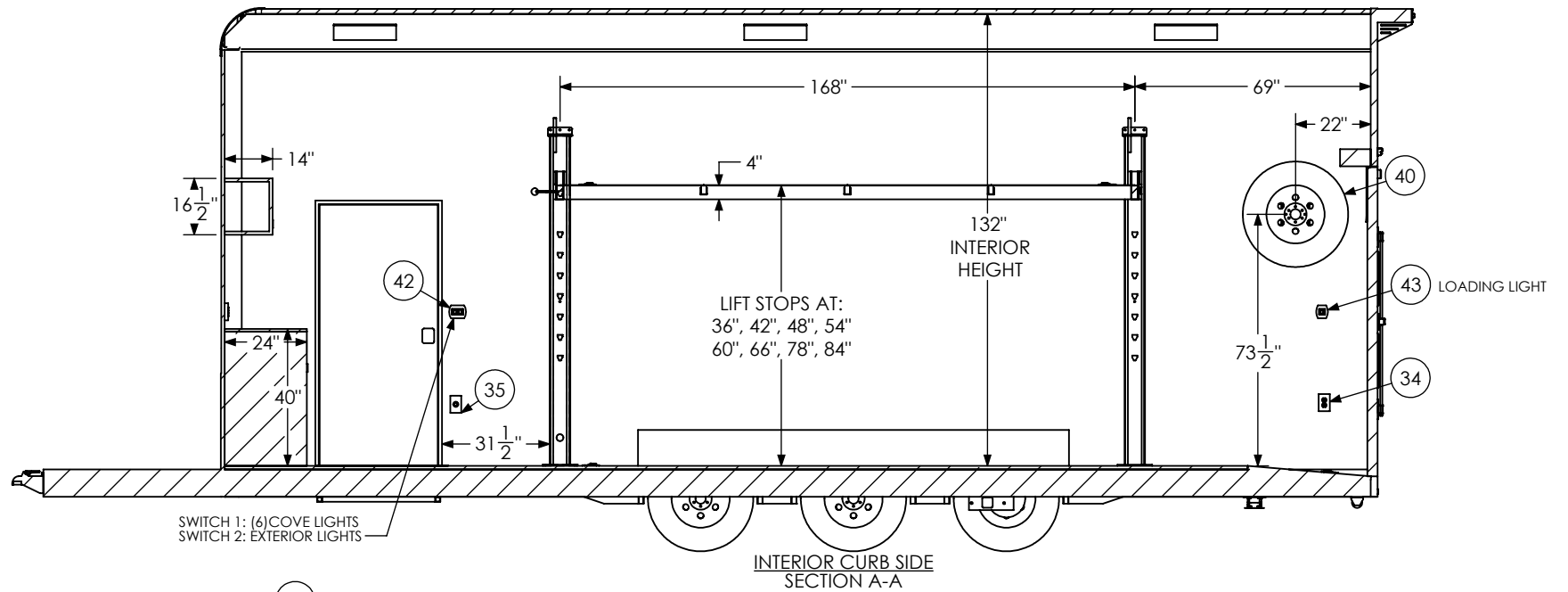
PROPRIETARY AND CONFIDENTIAL
 THE INFORMATION CONTAINED IN THIS DRAWING IS THE
 SOLE PROPERTY OF INTECH TRAILERS. ANY REPRODUCTION
 IN PART OR AS A WHOLE WITHOUT THE WRITTEN PERMISSION
 OF INTECH TRAILERS IS PROHIBITED.

SCALE: 1:55	NAME	DATE	<i>inTech Trailers</i>	
DRAWN	NjM	2/1/23	inTech - Lite Stacker BSL8.5x28TTA4 - STANDARD BOM	
ALL DIMENSIONS ARE IN INCHES AND ARE NOMINAL. DIMENSIONS ON ACTUAL TRAILER MAY VARY FROM WHAT IS SHOWN ON PRINT BASED ON ACTUAL FRAMING AND TRAILER STRUCTURE. UNLESS NOTED AS CRITICAL		DWG. NO.	SHEET 1 OF 5	REV. B
		BSL8.5x28TTA Trailer Assembly - Standard		



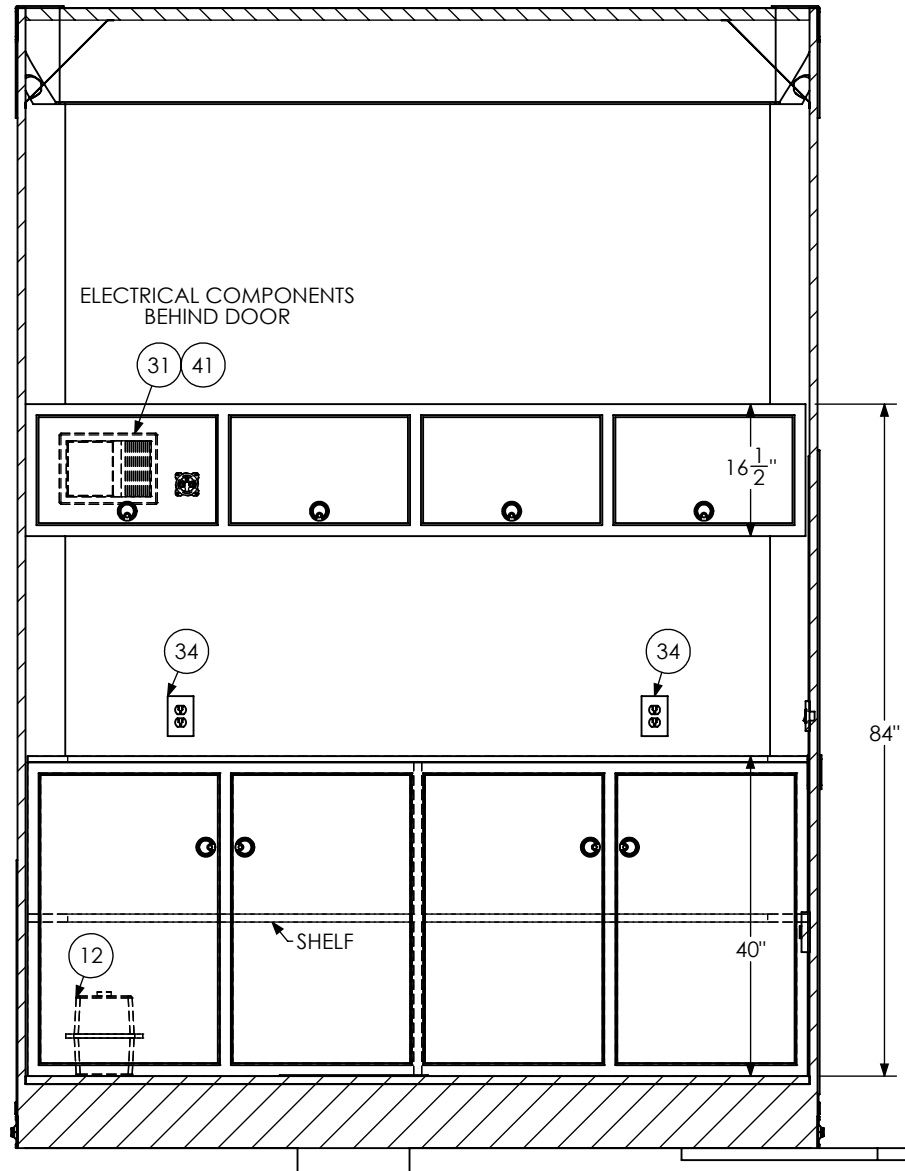
PROPRIETARY AND CONFIDENTIAL
 THE INFORMATION CONTAINED IN THIS DRAWING IS THE
 SOLE PROPERTY OF INTECH TRAILERS. ANY REPRODUCTION
 IN PART OR AS A WHOLE WITHOUT THE WRITTEN PERMISSION
 OF INTECH TRAILERS IS PROHIBITED.

SCALE: 1:45	NAME	DATE	inTech Trailers	
DRAWN	NjM	2/1/23	inTech - Lite Stacker BSL8.5x28TTA4 - STANDARD FLOORPLAN	
ALL DIMENSIONS ARE IN INCHES AND ARE NOMINAL. DIMENSIONS ON ACTUAL TRAILER MAY VARY FROM WHAT IS SHOWN ON PRINT BASED ON ACTUAL FRAMING AND TRAILER STRUCTURE. UNLESS NOTED AS CRITICAL		DWG. NO.	SHEET 2 OF 5	REV.
		BSL8.5x28TTA Trailer Assembly - Standard		B



PROPRIETARY AND CONFIDENTIAL
THE INFORMATION CONTAINED IN THIS DRAWING IS THE SOLE PROPERTY OF INTECH TRAILERS. ANY REPRODUCTION IN PART OR AS A WHOLE WITHOUT THE WRITTEN PERMISSION OF INTECH TRAILERS IS PROHIBITED.

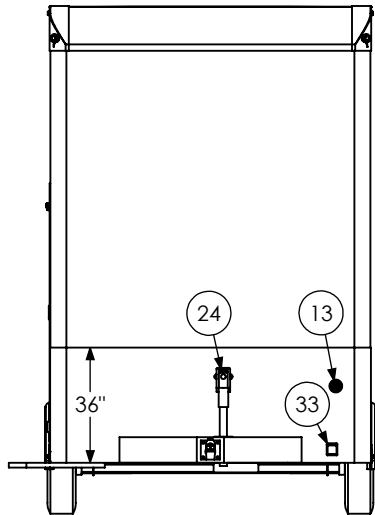
SCALE: 1:50	NAME	DATE	inTech Trailers	
DRAWN	NjM	2/1/23	inTech - Lite Stacker BSL8.5x28TTA4 - STANDARD INTERIOR SIDES	
ALL DIMENSIONS ARE IN INCHES AND ARE NOMINAL. DIMENSIONS ON ACTUAL TRAILER MAY VARY FROM WHAT IS SHOWN ON PRINT BASED ON ACTUAL FRAMING AND TRAILER STRUCTURE. UNLESS NOTED AS CRITICAL			DWG. NO. BSL8.5x28TTA Trailer Assembly - Standard	SHEET 3 OF 5 REV. B



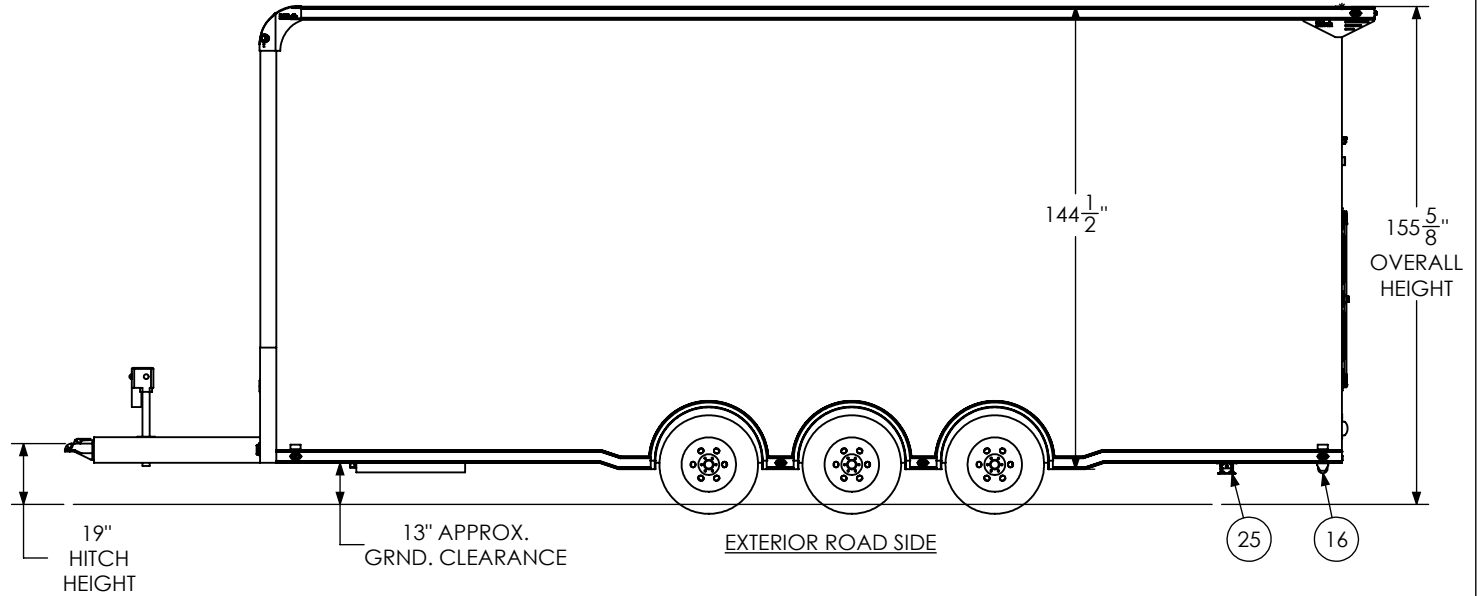
INTERIOR FRONT
SECTION C-C

PROPRIETARY AND CONFIDENTIAL
THE INFORMATION CONTAINED IN THIS DRAWING IS THE
SOLE PROPERTY OF INTECH TRAILERS. ANY REPRODUCTION
IN PART OR AS A WHOLE WITHOUT THE WRITTEN PERMISSION
OF INTECH TRAILERS IS PROHIBITED.

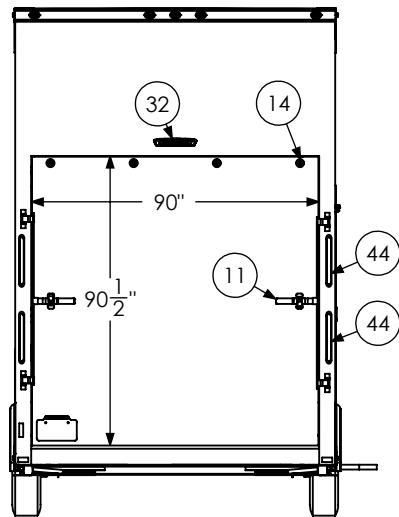
SCALE: 1:24	NAME	DATE	<i>inTech Trailers</i>	
DRAWN	NjM	2/1/23	inTech - Lite Stacker BSL8.5x28TTA4 - STANDARD INTERIOR FRONT	
ALL DIMENSIONS ARE IN INCHES AND ARE NOMINAL. DIMENSIONS ON ACTUAL TRAILER MAY VARY FROM WHAT IS SHOWN ON PRINT BASED ON ACTUAL FRAMING AND TRAILER STRUCTURE. UNLESS NOTED AS CRITICAL		DWG. NO.	SHEET 4 OF 5	REV.
		BSL8.5x28TTA Trailer Assembly - Standard		B



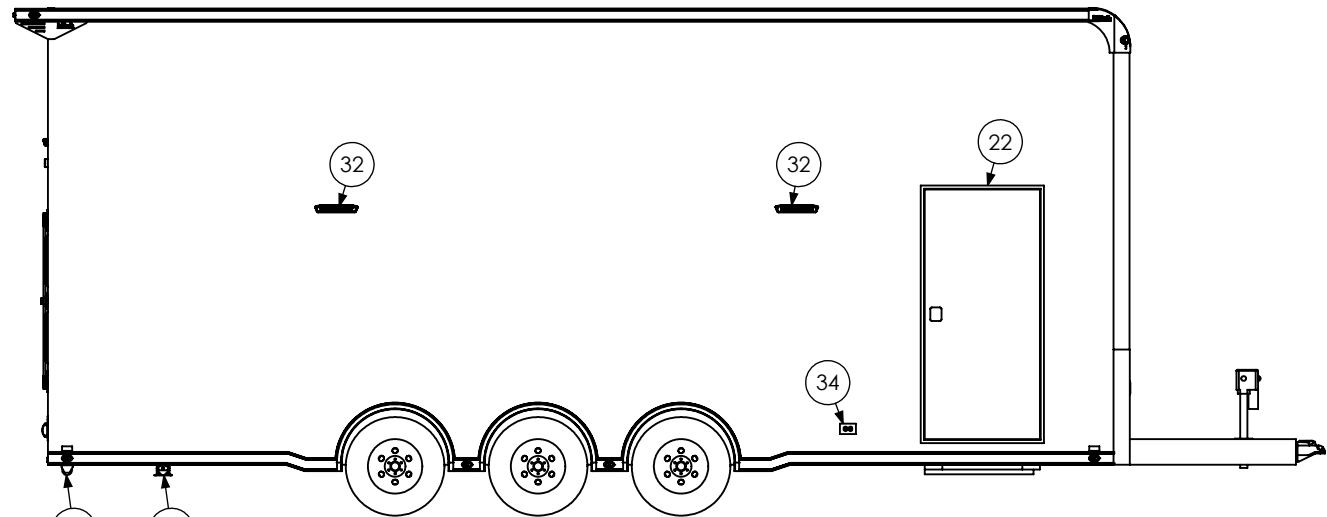
EXTERIOR FRONT



EXTERIOR ROAD SIDE



EXTERIOR REAR



EXTERIOR CURB SIDE

PROPRIETARY AND CONFIDENTIAL

THE INFORMATION CONTAINED IN THIS DRAWING IS THE SOLE PROPERTY OF INTECH TRAILERS. ANY REPRODUCTION IN PART OR AS A WHOLE WITHOUT THE WRITTEN PERMISSION OF INTECH TRAILERS IS PROHIBITED.

SCALE: 1:60	NAME	DATE	<i>inTech Trailers</i>	
DRAWN	NjM	2/1/23	inTech - Lite Stacker BSL8.5x28TTA4 - STANDARD EXTERIOR	
ALL DIMENSIONS ARE IN INCHES AND ARE NOMINAL. DIMENSIONS ON ACTUAL TRAILER MAY VARY FROM WHAT IS SHOWN ON PRINT BASED ON ACTUAL FRAMING AND TRAILER STRUCTURE. UNLESS NOTED AS CRITICAL			DWG. NO. BSL8.5x28TTA Trailer Assembly - Standard	SHEET 5 OF 5 REV. B